

PL# 891 (1 OF 3) 12-21-2010 2:20 P.M.

REFERENCE :

PERIMETER INFORMATION DERIVED FROM PLAN ENTITLED "FULL SERVICE RETIREMENT COMMUNITY, ACTON, MA UTILITIES PLAN" DATED NOV. 10, 1998 BY STAMSKI & McNARY, INC.
 MIDDLESEX REGISTRY OF DEEDS
 SOUTH DISTRICT
 PLAN NUMBER 578 OF 2007

NOTE :

THIS PLAN IS BASED ON AN ON THE GROUND SURVEY. THE CERTIFICATION HEREON IS INTENDED TO MEET THE REQUIREMENTS OF THE REGISTRY OF DEEDS ONLY, AND IS NOT A CERTIFICATION TO THE TITLE OR OWNERSHIP OF THE PROPERTY SHOWN, OR AS TO THE EXISTENCE OR RECORDED OR UNRECORDED EASEMENTS. OWNERSHIP OF ADJUTING PROPERTIES ARE FROM ASSESSORS RECORDS.

CERTIFICATION

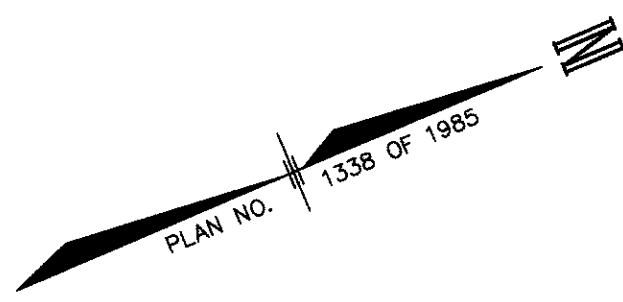
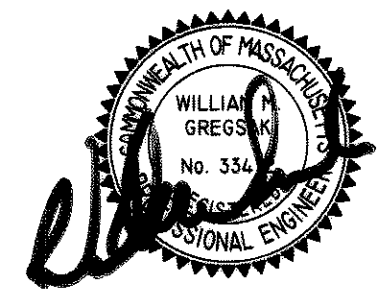
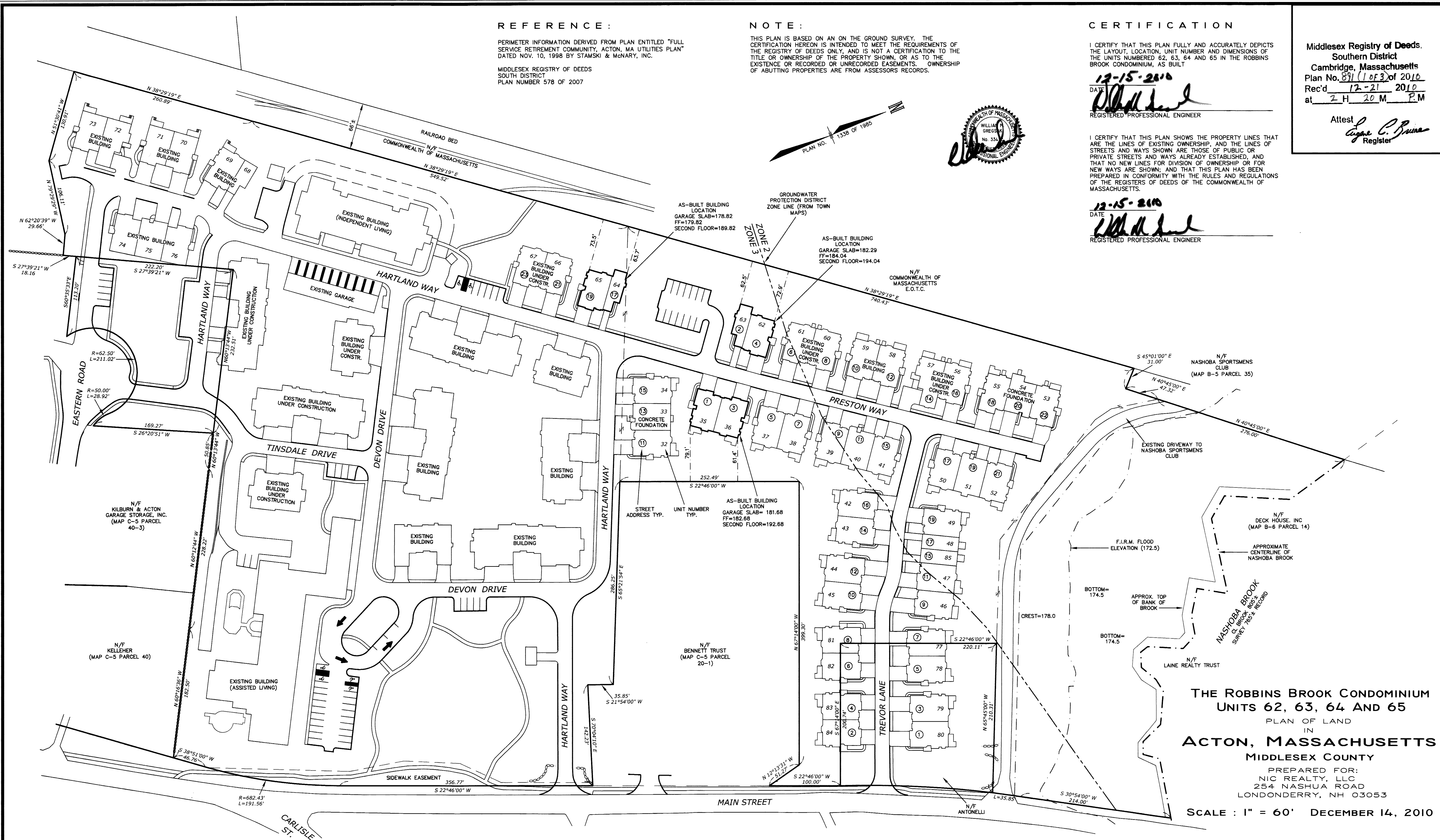
I CERTIFY THAT THIS PLAN FULLY AND ACCURATELY DEPICTS THE LAYOUT, LOCATION, UNIT NUMBER AND DIMENSIONS OF THE UNITS NUMBERED 62, 63, 64 AND 65 IN THE ROBBINS BROOK CONDOMINIUM, AS BUILT

12-15-2010
 DATE
 [Signature]
 REGISTERED PROFESSIONAL ENGINEER

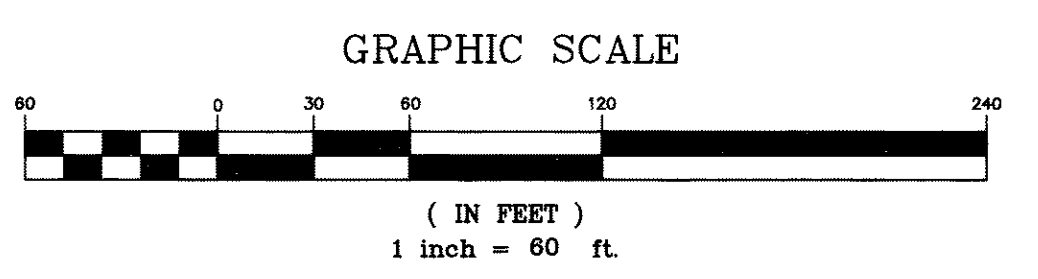
I CERTIFY THAT THIS PLAN SHOWS THE PROPERTY LINES THAT ARE THE LINES OF EXISTING OWNERSHIP, AND THE LINES OF STREETS AND WAYS SHOWN ARE THOSE OF PUBLIC OR PRIVATE STREETS AND WAYS ALREADY ESTABLISHED, AND THAT NO NEW LINES FOR DIVISION OF OWNERSHIP OR FOR NEW WAYS ARE SHOWN; AND THAT THIS PLAN HAS BEEN PREPARED IN CONFORMITY WITH THE RULES AND REGULATIONS OF THE REGISTERS OF DEEDS OF THE COMMONWEALTH OF MASSACHUSETTS.

12-15-2010
 DATE
 [Signature]
 REGISTERED PROFESSIONAL ENGINEER

Middlesex Registry of Deeds,
 Southern District
 Cambridge, Massachusetts
 Plan No. 891 (1 OF 3) of 2010
 Rec'd 12-21 2010
 at 2 H 20 M P.M.
 Attest
 [Signature]
 Register



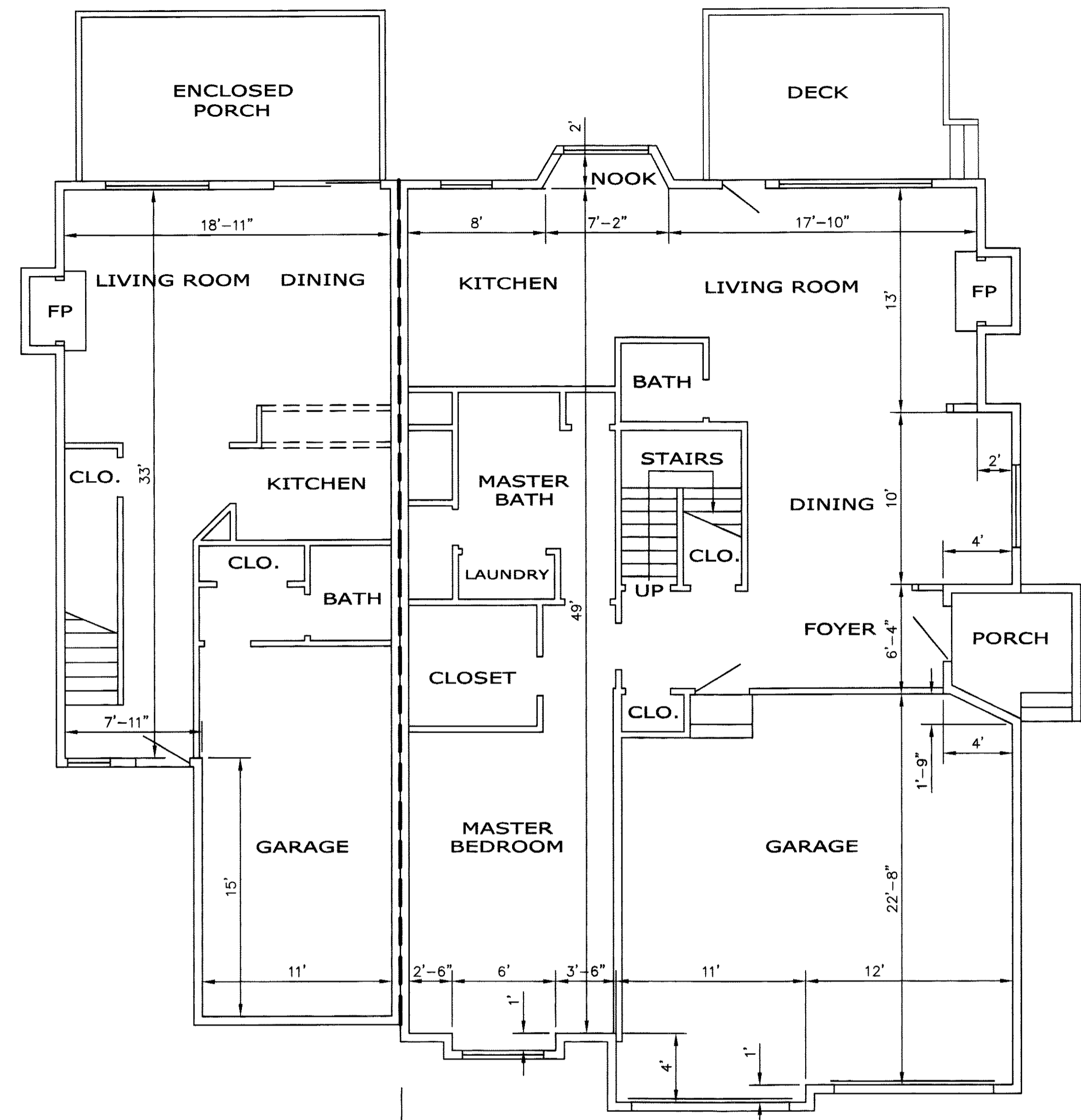
REVISIONS		
NO.	DESCRIPTION	DATE



**THE ROBBINS BROOK CONDOMINIUM
 UNITS 62, 63, 64 AND 65**
 PLAN OF LAND
 IN
ACTON, MASSACHUSETTS
 MIDDLESEX COUNTY
 PREPARED FOR:
 NIC REALTY, LLC
 254 NASHUA ROAD
 LONDONDERRY, NH 03053
 SCALE : 1" = 60' DECEMBER 14, 2010

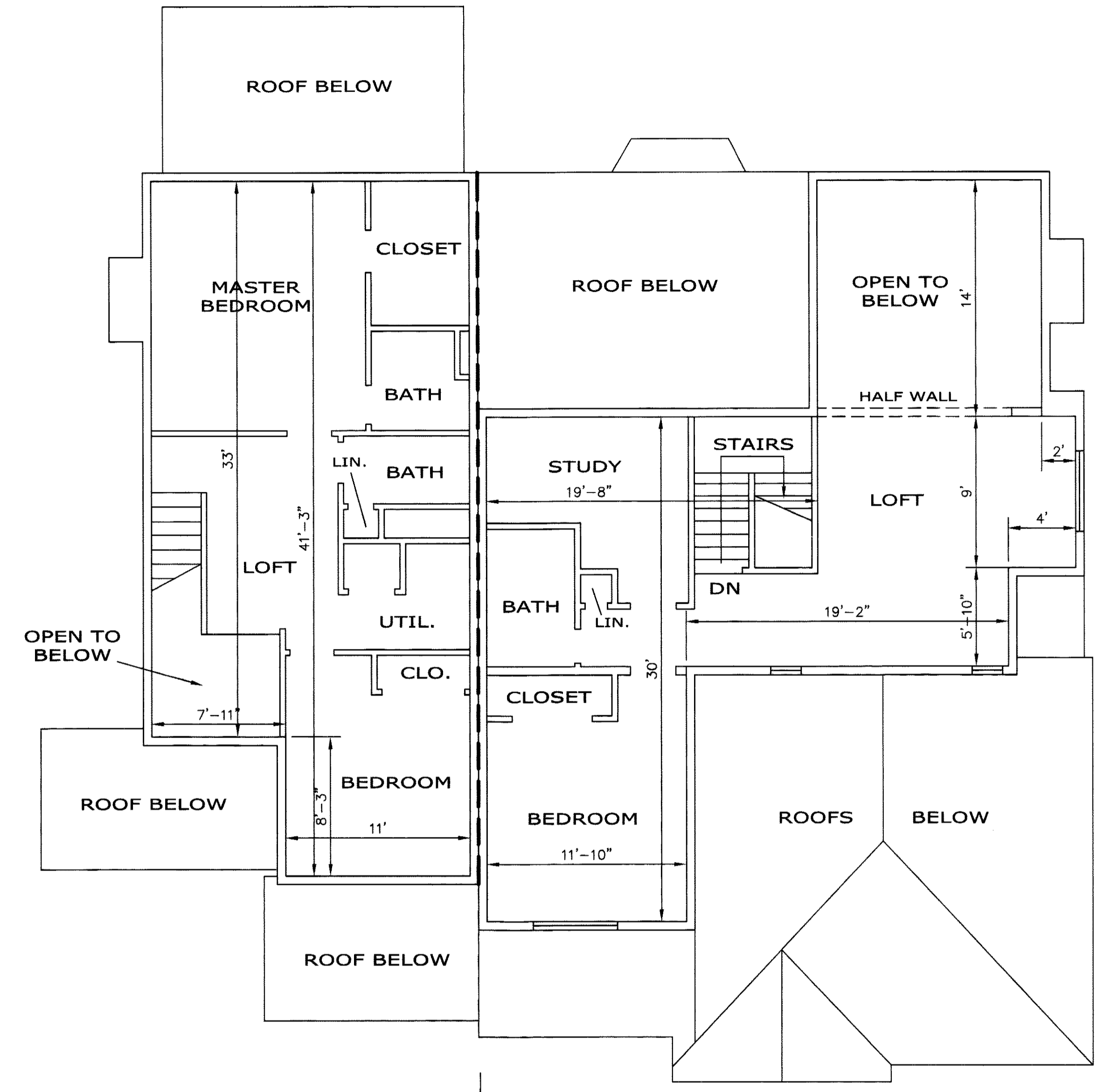
PREPARED BY
GREGSAK ENGINEERING, INC.
 CONSULTING ENGINEERS
 AND
 PLANNERS
 P.O. BOX 271
 CHESTER, NEW HAMPSHIRE 03036
 PH: (603) 887-6979
 FAX: (603) 887-6636
 WWW.GREGSAK.COM

891-1



UNIT 63
2 PRESTON WAY

UNIT 62
4 PRESTON WAY



UNIT 63
2 PRESTON WAY

UNIT 62
4 PRESTON WAY

UNIT AREAS

	UNIT 62	UNIT 63
FIRST FLOOR	1,754 SF	961 SF
SECOND FLOOR	862 SF	715 SF
TOTAL	2,616 SF	1,676 SF

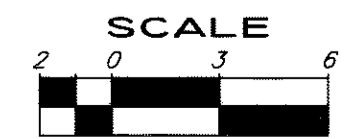
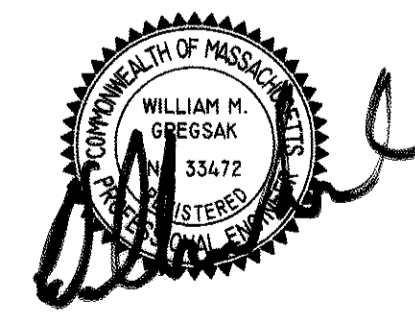
NOTES

1. THESE TWO UNITS DO NOT HAVE A BASEMENT LEVEL.

CERTIFICATION

I CERTIFY THAT THIS PLAN SHOWS THE UNIT BEING CONVEYED; THAT IT FULLY AND ACCURATELY DEPICTS THE LAYOUT, LOCATION, DIMENSIONS, APPROXIMATE AREA, MAIN ENTRANCE AND IMMEDIATE COMMON AREA TO WHICH IT HAS ACCESS; AS BUILT; AND THAT THIS PLAN FULLY AND ACCURATELY DEPICTS THE LAYOUT, LOCATION, UNIT NUMBER AND DIMENSIONS OF THE UNITS NUMBERED 62 AND 63 IN THE ROBBINS BROOK CONDOMINIUM, AS BUILT; AND THAT THIS PLAN HAS BEEN PREPARED IN CONFORMITY WITH THE RULES AND REGULATIONS OF THE REGISTERS OF DEEDS OF THE COMMONWEALTH OF MASSACHUSETTS.

12-15-2010
DATE
William M. Gregsak
REGISTERED PROFESSIONAL ENGINEER



THE ROBBINS BROOK CONDOMINIUM
UNITS 62 AND 63
2 AND 4 PRESTON WAY

FLOOR PLAN
IN
ACTON, MASSACHUSETTS
MIDDLESEX COUNTY

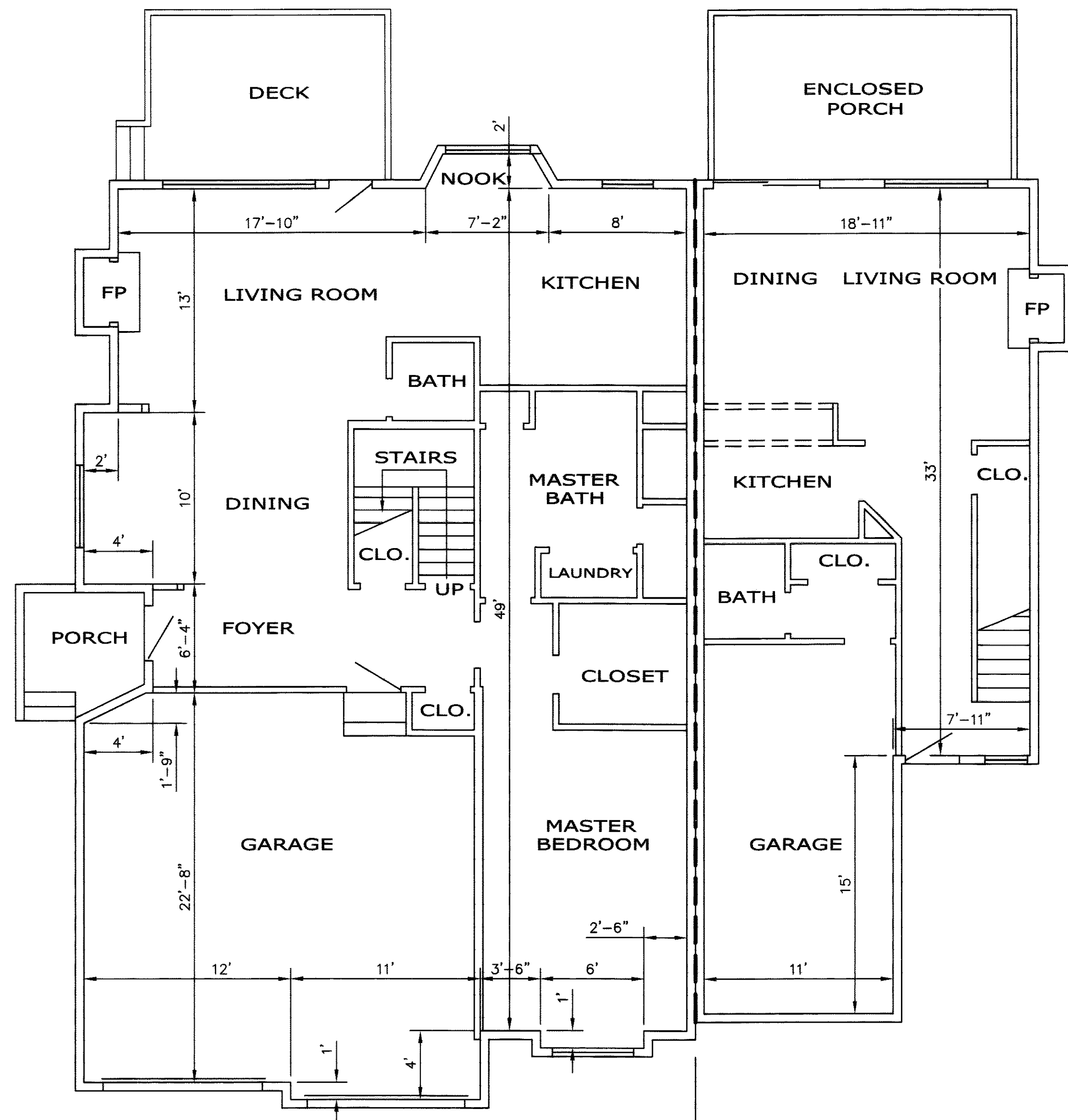
PREPARED FOR:
NIC REALTY, LLC
254 NASHUA ROAD
LONDONDERRY, NH 03053

SCALE : 3/16"=1'-0" DECEMBER 14, 2010

REVISIONS		
NO.	DESCRIPTION	DATE

PREPARED BY
GREGSAK ENGINEERING, INC.
CONSULTING ENGINEERS
AND
PLANNERS
P.O. BOX 271
CHESTER, NEW HAMPSHIRE 03036
PH: (603) 887-6979
FAX: (603) 887-6936
WWW.GREGSAK.COM

891-2

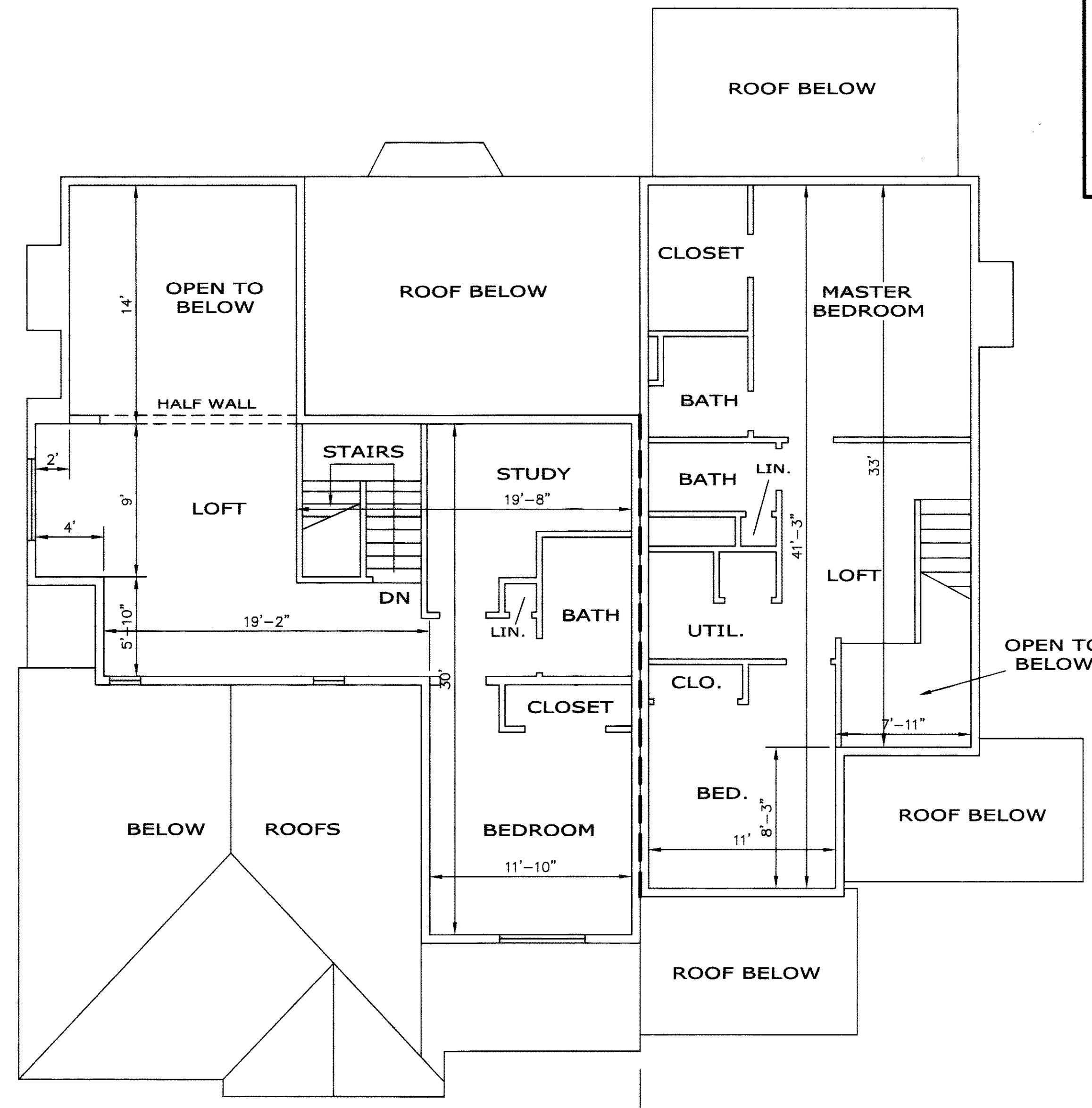


UNIT 65
19 HARTLAND WAY

UNIT 64
17 HARTLAND WAY

UNIT AREAS

	UNIT 65	UNIT 64
FIRST FLOOR	1,754 SF	961 SF
SECOND FLOOR	862 SF	715 SF
TOTAL	2,616 SF	1,676 SF



UNIT 65
19 HARTLAND WAY

UNIT 64
17 HARTLAND WAY

NOTES

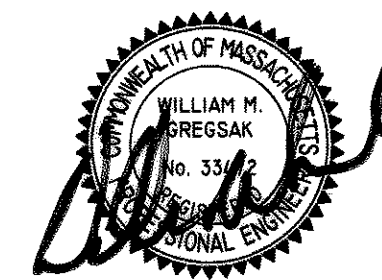
1. THESE TWO UNITS DO NOT HAVE A BASEMENT LEVEL.

CERTIFICATION

I CERTIFY THAT THIS PLAN SHOWS THE UNIT BEING CONVEYED; THAT IT FULLY AND ACCURATELY DEPICTS THE LAYOUT, LOCATION, DIMENSIONS, APPROXIMATE AREA, MAIN ENTRANCE AND IMMEDIATE COMMON AREA TO WHICH IT HAS ACCESS; AS BUILT; AND THAT THIS PLAN FULLY AND ACCURATELY DEPICTS THE LAYOUT, LOCATION, UNIT NUMBER AND DIMENSIONS OF THE UNITS NUMBERED 62 AND 63 IN THE ROBBINS BROOK CONDOMINIUM, AS BUILT; AND THAT THIS PLAN HAS BEEN PREPARED IN CONFORMITY WITH THE RULES AND REGULATIONS OF THE REGISTERS OF DEEDS OF THE COMMONWEALTH OF MASSACHUSETTS.

12-15-2010
DATE

William M. Gregsak
REGISTERED PROFESSIONAL ENGINEER



THE ROBBINS BROOK CONDOMINIUM
UNITS 64 AND 65
17 AND 19 HARTLAND WAY

FLOOR PLAN
IN
ACTON, MASSACHUSETTS
MIDDLESEX COUNTY

PREPARED FOR:
NIC REALTY, LLC
254 NASHUA ROAD
LONDONDERRY, NH 03053

SCALE : 3/16"=1'-0" DECEMBER 14, 2010

PREPARED BY
GREGSAK ENGINEERING, INC.
CONSULTING ENGINEERS
AND
PLANNERS
P.O. BOX 271
CHESTER, NEW HAMPSHIRE 03036
PH: (603) 887-6979
FAX: (603) 887-6636
WWW.GREGSAK.COM



REVISIONS		
NO.	DESCRIPTION	DATE